



HUELLA VERDE MALLORCA

BUILDING A SUSTAINABLE LIFESTYLE, TOGETHER

THE VISION

My name is Sigal Weiss, an eco-entrepreneur, a keen nature lover and a resident of Mallorca for the last seven years. After gaining fare share of experience in the field of real-estate social entrepreneurship and management, I established a successful design and construction company with high-end clientele.

Recognizing the needs of the islanders and the many foreigners who live here, we began promoting an initiative of “Silicon Valley” sustainable eco- development, that offers a new way of working and living: 114 energy-saving innovative eco-houses with working spaces for eco- startups developers and other creative minds.

The idea is to create a place that will serve as a magnet for creative people and of free professions, with a clear understanding of the sustainability values in our region.

The Entrepreneurship Center that will be built as part of the project will serve as “the heart of the settlement” and will be first of its kind in Europe. It will help and enable people to upgrade their businesses and to implement new ideas with the support of the community.

Needless to say, the commitment to sustainability issues in real estate projects is one of Europe’s hottest trends, as Mallorca itself offers so much more: a comfortable climate year round, a proximity to Europe with convenient transportation, a large vibrant international community, a safe environment for family life and a quality education.

We do believe that this project offers a great opportunity to leave a major footprint for the future generations in time of economical and social uncertainty.

The Huella Verde project, as we think, offers a contemporary mixture of living, working, leisure and shopping that wishes to make a difference on this planet.



1

It is the first unique
prototype of its kind in
Europe

2

We aim to create more
“communities” in other
European countries

3

There is a second phase in
an area with similar
characteristics, to be
developed below.



Concept

The Huella Verde Mallorca settlement offers you more than a place to live, each of its 114 units will reflect sustainable construction, water integration, food and energy systems under one roof. Each unit will be designed and built according to sustainable living including size, orientation, energy consumption, wind direction and gardening – from ornamental plants and flowers to fruits and vegetables.



Patios offer privacy and constant contact with the natural environment





Sustainable Co-housing

We give you the opportunity to live in one of our 114 energy-saving efficient, innovative eco-houses, in a the community established specifically for sustainable living form community,. mitigating our With footprint mitigation in on water, energy, waste, soil, transportation, flora & fauna, and located just minutes away from the beautiful city of Palma de Mallorca, the airport, beaches and golf.



Creative Co-working

Each house has an additional space (60m2) that can be used for either and for an office, a shop or other business related function. Being a part of engaged in such a rich and supportive community, you should have the opportunity to develop your creative work and exchange ideas with other creative minds. Sharing creativity mutually empowers business development for the benefit of the community. The ecovillage entrepreneurship center will assist you attain excellence and economical prosperity.



Eco community

Work and have an amazing time in the most natural and healthy ways: grow organic vegetables and herbs, self-produce renewable energy from solar, wind, geothermal, biomass, waste use, commute with public electric car-sharing, and enjoying a healthy Mediterranean diet (each plot with and area of 2,000 - 3,000m2).





Act local - Think global

Palma is the largest city on the Island of Mallorca, with a population of about 400,000 inhabitants, established in the Roman period. Since the advent of mass tourism in the 1950s, Mallorca has transformed into a tourist destination, with clusters of international resort hotel chains.

With a Mediterranean Climate the temperatures range between 15°C in winter to 26°C in summer, Mallorca offers an excellent quality of life and a perfect balance of local and global, a modern city and rich cultural heritage.

Connected City and Healthy Country

Huella Verde Mallorca Community is located 10 minutes from the airport and 8 minutes from the “Son Llatzer” Hospital. Palma is the European Top12 airport and Top 1 for cities with less than 1 million inhabitants. Bloomberg (2017) considers Spain to have the World’s Top 3 most efficient health-care systems after Hong Kong and Singapore, being best in the Western World.

Palma the best Place to Live in the World

On March 22, 2015, the Sunday Times published the article: “Best Places to Live in the World: Earthly pleasures”, which considered Palma de Mallorca as “the best place to live in the world” because “it has everything” and “in an accessible”...The newspaper highlighted the “exceptional climate” and cultural weight of the old town of “one of the most picturesque Spanish” ... with beaches in urban surroundings. Palma opened the ranking of the 50 favorite cities of the planet, ahead Toronto (Canada), Auckland (New Zealand), Hoi An (Vietnam) or Berlin (Germany).



Mallorca



15 min



10 min



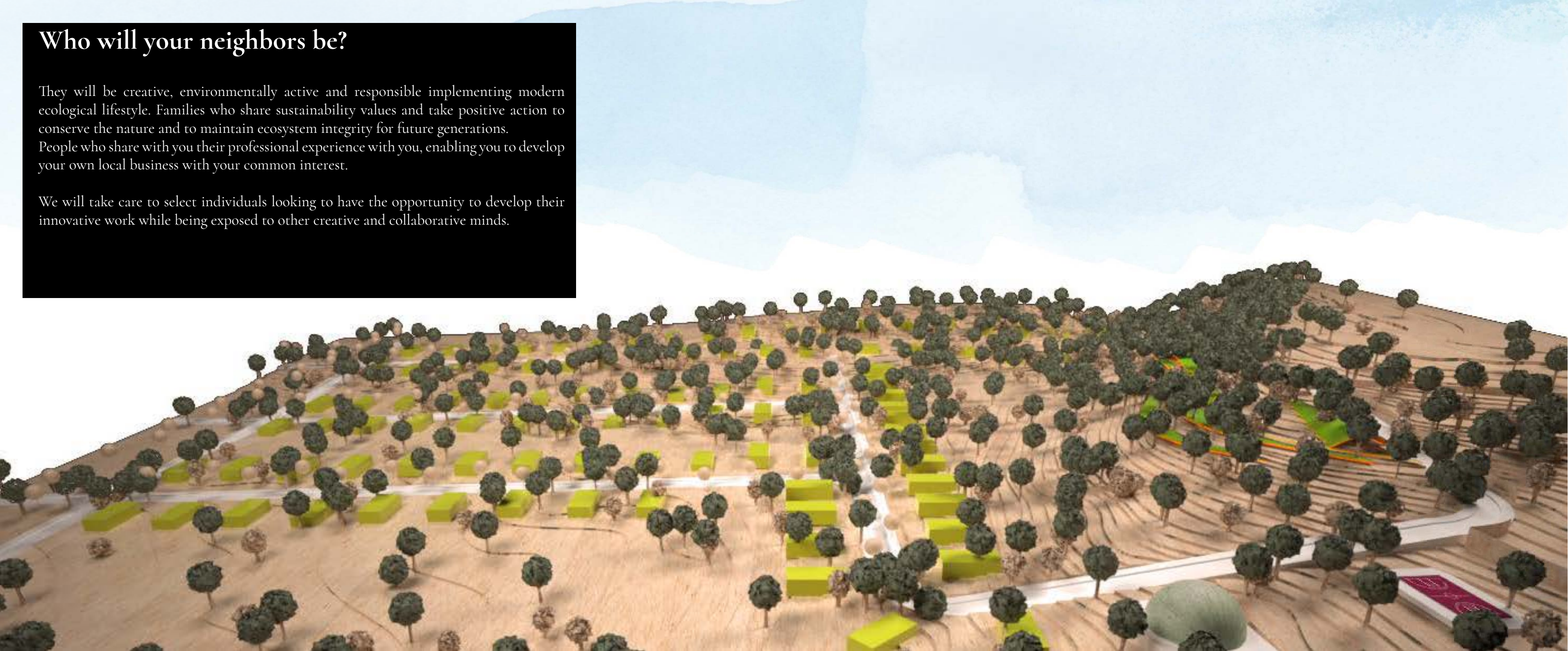
5 min



Who will your neighbors be?

They will be creative, environmentally active and responsible implementing modern ecological lifestyle. Families who share sustainability values and take positive action to conserve the nature and to maintain ecosystem integrity for future generations. People who share with you their professional experience with you, enabling you to develop your own local business with your common interest.

We will take care to select individuals looking to have the opportunity to develop their innovative work while being exposed to other creative and collaborative minds.



Projected facility	Projected area m2
Exclusive guests rooms	2.850
Shops in centre	480
Cultural centre	500
Restaurant and bars	250
Gallery	220
Studios	120
Fitness / Gym	180
Bird's eco park	7.500
Kindergarten	250
Entrepreneur Centre	250
Public pool	350
Changing rooms	50
Sport court	200
Houses 90 m2	3.800
Houses 140 m2	5.800
Houses 180 m2	7.800
Works spaces 60 m2	7.800
Swimming pool	48
TOTAL AREA	42.800



Parapharmacy, gallery, restaurants, eco-shop and theatre



Public Buildings for the Community

Basic Facilities

Restaurant, parapharmacy, eco-shopping, theatre and music center (+ 4 study classes), gallery (+4 residency spaces), open Amphitheater, sports ground, kindergarten, swimming pool.

Commercial Spaces

8 eco-shops; 1 bar & restaurant; 1 spa center; 1 gym & fitness and 36 exclusive rooms in the Bed & Breakfast for guests and visitors.

Entrepreneurship Business Center

The EBC offers the village residents the best support they can get to realize their creativity and vision. EBC will support eco-friendly products for the benefit of the environment and the people's wellbeing. The excellent location of Huella Verde Mallorca supports close relationships with residents' suppliers and customers around the world with the use of the EBC's showrooms and open capacitation.

Bird Eco-Park

The Birding Center will provide an important ecological social enterprise that matches the "green way of life" of the community members. (See page maps 7,000 - 7,500 m2 NW) .



Private Buildings Components

The Huella Verde Mallorca settlement offers you more than a place to live, each of its 114 units will reflect sustainable construction, water integration, food and energy systems under one roof. Each unit will be designed and built according to sustainable living including size, orientation, energy consumption, wind direction and gardening – from ornamental plants and flowers to fruits and vegetables.

Water & Soil Footprint management:

Each home will have a sustainable gray & recycled water purification system supplying the ornamental gardens and monitored by soil moisture and weather sensors. Other recycling system will be installed in each unit to decompose the waste and use it as odor-free cooking biogas and liquid fertilizers.

Energy Efficiency management:

Taking into account the considerable time we spend in our houses, a special emphasis will be given to new heating & cooling consumption systems using innovative technologies and high-quality products. Solar photovoltaic and thermal systems will be installed along with energy storing devices. Small wind and geothermal facilities will also be installed. Energy saving green roofs and vertical gardens will position us on the cutting edge of eco-housing developments. Finally the energy efficiency sensor network will be managed by home automation system in houses and public facilities. This systems will control and update 24/7 by smart devices (i. e. phones, watches) on home and public green footprints.





House Concept

The Huella Verde Mallorca settlement offers you more than a place to live, each of its 114 units will reflect sustainable construction, water integration, food and energy systems under one roof. Each unit will be designed and built according to sustainable living including size, orientation, energy consumption, wind direction and gardening – from ornamental plants and flowers to fruits and vegetables.



Water recycling systems for use in irrigation and gardens to be used in homes



Energy Efficiency management:

Taking into account the considerable time we spend in our houses, a special emphasis will be given to new heating & cooling consumption systems using innovative technologies and high-quality products. Solar photovoltaic and thermal systems will be installed along with energy storing devices. Small wind and geothermal facilities will also be installed. Energy saving green roofs and vertical gardens will position us on the cutting edge of eco-housing developments. Finally the energy efficiency sensor network will be managed by home automation system in houses and public facilities. This systems will control and update 24/7 by smart devices (i. e phones, watches) on home and public green footprints.



Houses will use clean energy systems



Type A: 64 houses
180 + 60 = 240 m2

Type B: 35 houses
140 + 60 = 200 m2

Type C: 50 houses
90 + 60 = 150 m2



Masterplan (42.800 m2 built area)



- 15 houses 150m2
- 35 houses 200m2
- 64 houses 240 m2
- School
- Spa
- 8 Eco shopping
- Gallery
- Bar + restaurant
- Amphiteather and pool
- Teather and music center
- Oficina de comunidad + 3 studios
- Kidergarten + BIZ Center
- Sport ground
- 42 boutique suites
- Bird Eco-park
- Parking





Entrepreneurship Business Center

The EBC offers the village residents the best support they can get to realize their creativity and vision. EBC will support eco-friendly products for the benefit of the environment and the people's wellbeing. The excellent location of Huella Verde Mallorca supports close relationships with residents' suppliers and customers around the world with the use of the EBC's showrooms and open capacitation.



Eco and green start-ups

Biz center



Bird Eco-Park

The Birding Center will provide an important ecological social enterprise that matches the “green way of life” of the community members. (See page maps 7,000 - 7,500 m2 NW) .



Bird Eco-Park

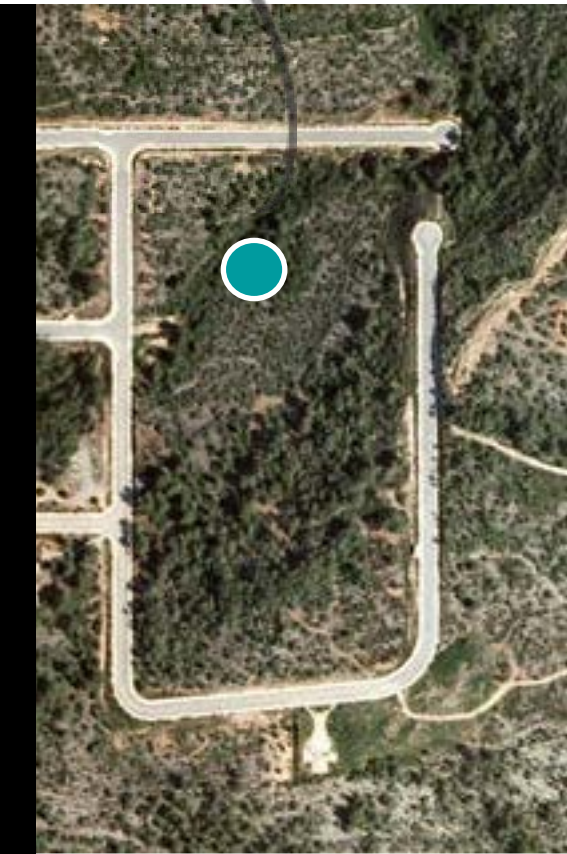


Contact with nature is part of the community



Spa and wellness centre

We are helping you to relax and enjoy the spirit of this unique retreat, a haven to replenish your strength and from which you can return to your life more serene and rested. Eco Spa enables you to sink into total relaxation with a wood burning hot tub it is the perfect place to unwind, whilst listening to the sounds of local wildlife during sundown. Help soothe away aches and pains from your day's activities.



Spa

Feel the true meaning of eco spa



Boutique accomodation

Sustainable visitors:

our boutique rooms are built with local materials and naturally decorated, planned in armony with nature.



Exclusive suites

Relax and enjoy the spirit of this authentic retreat



Kindergarden

Giving kids the tools they need to succeed. You want your kids to become their own best selves; academically, physically, socially, emotionally. You want them to be resilient in a constantly changing, evermore challenging world. You want them to be happy, healthy, and whole. Yoga Calm can give them the tools they need to succeed.



Here they can grow in a natural environment

Kindergarden



**INSPIRE PEOPLE TO DO THE THINGS THAT INSPIRE THEM AND, TOGETHER,
WE CAN CHANGE OUR WORLD.
CHOOSE - TO LIVE, CREATE, WORK - WITH US**

HUELLA VERDE MALLORCA
huellaverde.mallorca@gmail.com